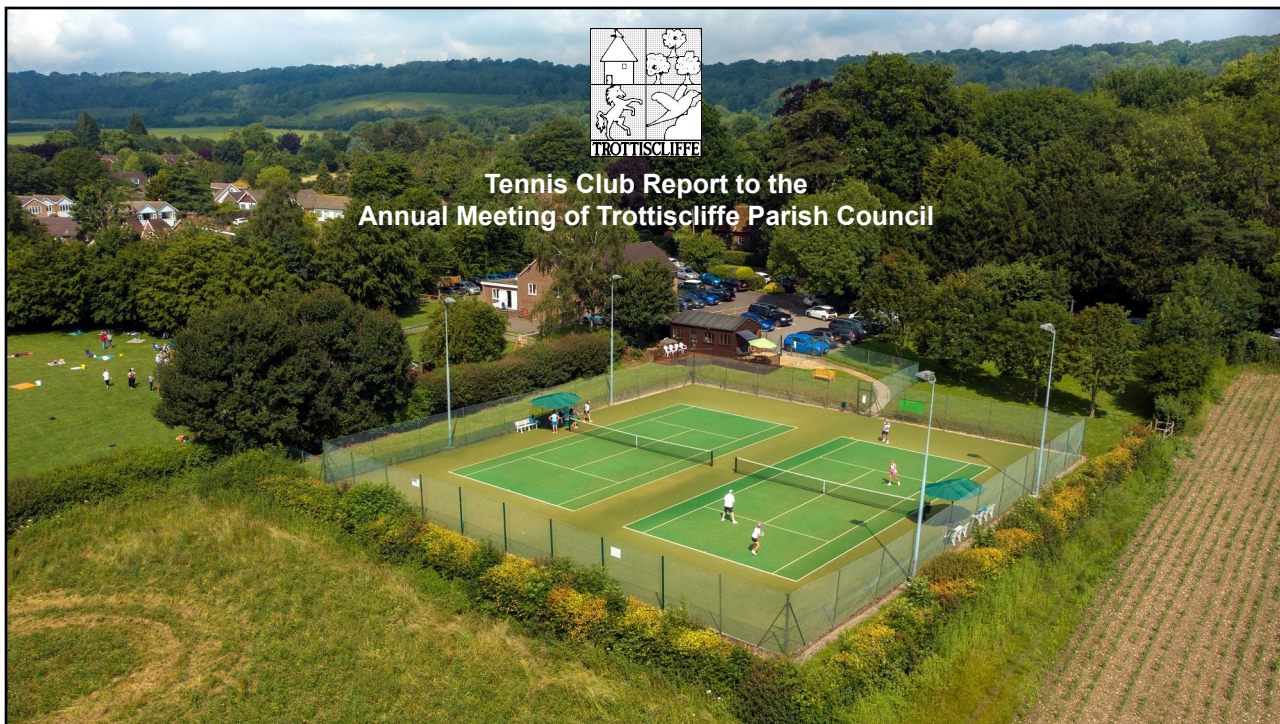
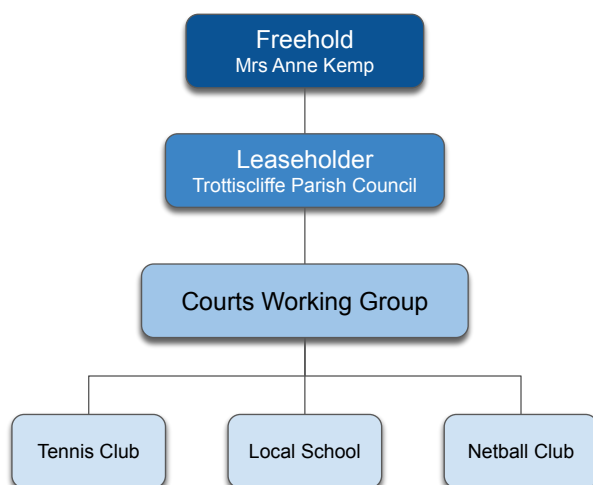




Tennis Club Report to the Annual Meeting of Trottscliffe Parish Council



Governance Structure



Club Mission & Core Values



Develop and maintain a thriving and friendly tennis community appealing equally to families, juniors, and adults of all abilities, by promoting social play, organised sessions, coaching/development opportunities, and competitive LTA league activity.

- Demonstrate enthusiasm and encourage others to become part of, and contribute to, a club-based tennis community.
- Strive to be fair, open-minded, and transparent in all that we do as a club.
- Encourage diversity, inclusiveness, and fair play, both on and off the courts.
- Be open, friendly, supportive, and respectful to all members, guests, and visitors.

Finances

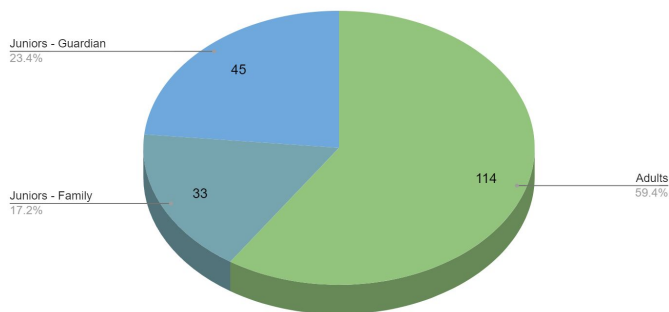


- The reinstatement fund managed by the Parish Council has been capped at £10,000 and no further contributions from the Tennis Club are planned.
- The majority of the Club's revenue is derived from membership subscriptions and amounted to approximately £11,500 in the past year.
- Additional income of some 10% is sourced from floodlight charges, guest fees, social events surpluses, and sponsorship.
- The Club has established a reserve fund for future major repair and renewal expenditure (e.g. Court surface) and aims to make an annual contribution of some £5,000 from its operational surplus.
- Charitable donations - £180 for the Village Jubilee Party and £300 to the Ellenor Hospice. £502 was raised for MacMillan Cancer Support through a Coffee Morning held at the Club.
- The Club's finances are dependent upon maintaining current membership levels which have grown over the past three years to a current total of 192 members.

Membership



Membership numbers total 192. The following diagram highlights the adult and junior membership numbers as of February 2023 prior to annual membership renewal due at the end of April.



Maintenance & Improvements



- Clubhouse refurbished and the roof sealed and refelted.
- Decking area repaired and significantly extended.
- Biodigester serviced and new air pump installed.
- New car park drain inspection chamber and pump installed.
- Main hedge on the recreation ground boundary cut back to allow access to the drainage ditch.
- Court fencing replaced with new netting and heavy-duty posts.
- Maintenance contract - courts treated for moss & algae, power brushed and redressed with specialised sand (4 visits per year).
- LED floodlights installed and column heights reduced.
- Concrete access path repaired.



- Establish a suitable agreement / sublease with the Parish Council to provide security of tenure for the Club.
- With the support of the Courts Working Group, improve the marketing of the facilities to encourage new members to join.
- Organise more social tennis events that are family and community focussed, e.g. Open Days, BBQs, Tournaments, etc
- Reach out to local schools to encourage the ongoing development of a junior tennis community at Trottiscliffe.
- Support LTA initiatives to get local children involved in tennis.
- Continue to maintain the facilities to a high standard.